

User manual
for fast configuration of SensMax
system
with the use of SensMax TCPIP data collector

STEP 1: Link of sensors to the data collector

First necessary action is to link sensor and data collector together. The link is necessary, to ensure, that the collector will be working only with particular sensors. Each collector can have links to 10 SensMax S1 Pro sensors or 5 SensMax D3 Pro sensors.

For linking, perform following actions:

1. Insert batteries into the sensor – the one with serial number (do not close the case cover)
2. Connect collector to USB or to power supply
3. Press the button on the collector (Radio Link indicator will start flashing)
4. Press the button inside sensor

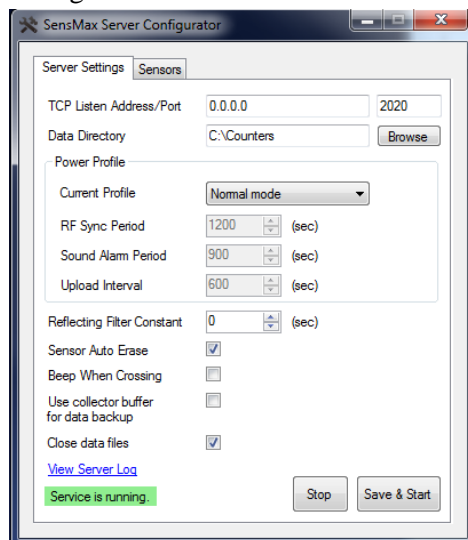
After linking, the sensors can be assembled and mounted in the passage.

Attention:

the sensors will not start counting, until date and time will be set. The date and time are set automatically, at first connection to the server.

STEP 2: Setting the SensMax Server

Install the SensMax Server programme on any computer. After installation, launch server configurator:



Indicate the directory for counter data base storage. It could be both local or network directory.

Please indicate the settings, as shown on the picture above.

Press “Save” to launch the server.

If everything is correct, the server will launch: **Service is running.**

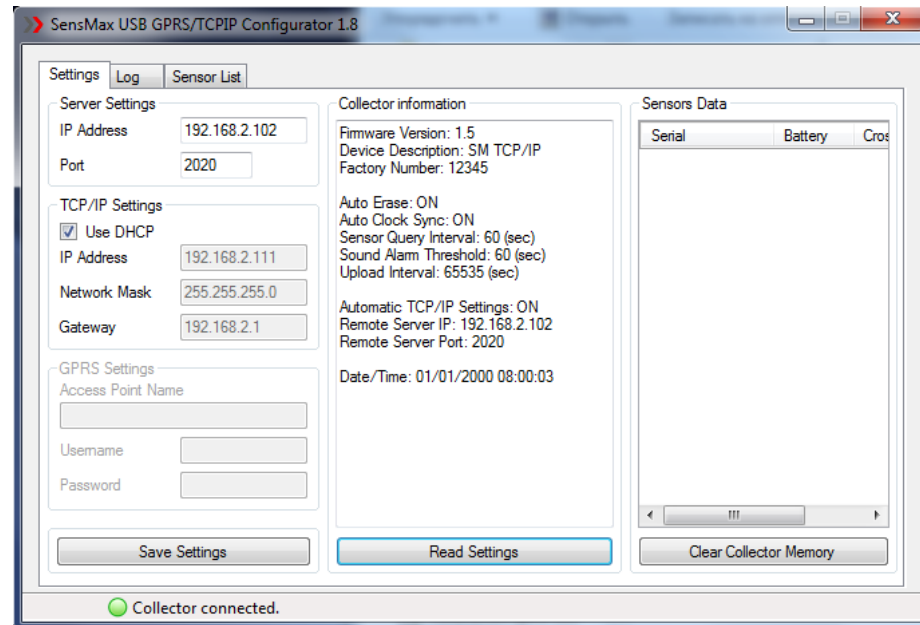
For more detailed information on data collector, see “**SensMax Hardware Manual**”, section “**SensMax Server**”.

STEP 3: configuration of TCP/IP data collector

When used for the first time, the data collector has to be configured.

Please connect collector to the USB port and start the “**TCPIP collector config**” programme.

Press “Read Setting” button:



Server Settings

- IP Address -server IP address (address of the computer, on which server is installed)
- Port -Server port (default 2020)

TCP/IP Settings

- IP Address - collector's IP address
- Network Mask
- Gateway

Please customize the settings and press “Save Setting” button.

Now power supply and RJ45 cable can be connected to the collector.



Attention:

Windows Firewall may block 2020 port. Verify, that this port is added to the exceptions.

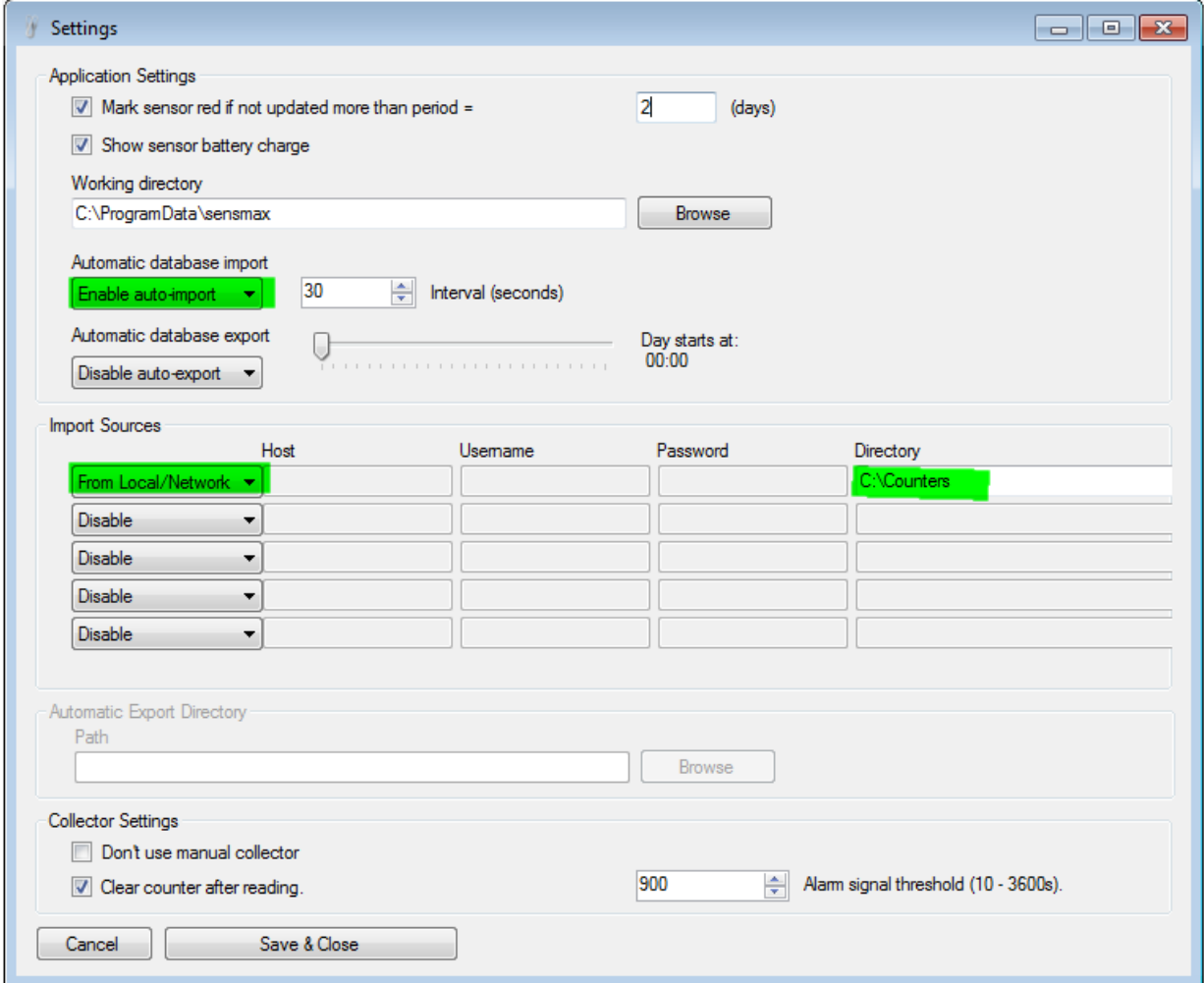
If everything is correct, the Server Link indicator will light up.

For more detailed information on data collectors, see the document “**SensMax Hardware Manual**”, section “**SensMax Pro TCPIP Data Collector**”.

STEP 4: Configuration of statistics display programme EasyReport

Launch **EasyReport**  programme and press the Settings button .

Indicate settings as shown on the picture below. It is necessary to specify the directory with data base and data import interval.



Settings

Application Settings

☒ Mark sensor red if not updated more than period = (days)

☒ Show sensor battery charge

Working directory

Automatic database import
 Interval (seconds)

Automatic database export
 Day starts at: 00:00

Import Sources

	Host	Username	Password	Directory
<input type="button" value="From Local/Network"/>				<input type="text" value="C:\Counters"/>
<input type="button" value="Disable"/>				
<input type="button" value="Disable"/>				
<input type="button" value="Disable"/>				
<input type="button" value="Disable"/>				

Automatic Export Directory

Path

Collector Settings

☐ Don't use manual collector

☒ Clear counter after reading. Alarm signal threshold (10 - 3600s).

Press **Save&Close** button to save the settings.

For a more detailed information on EasyReport programme, see "**EasyReport User Manual**".